



**REGIONAL SPECIALISED METEOROLOGICAL CENTRE-TROPICAL CYCLONES, NEW DELHI
TROPICAL WEATHER OUTLOOK**

DEMS-RSMC TROPICAL CYCLONES NEW DELHI DATED 05.11.2021

TROPICAL WEATHER OUTLOOK FOR NORTH INDIAN OCEAN (THE BAY OF BENGAL AND ARABIAN SEA) VALID FOR NEXT 120 HOURS ISSUED AT 0600 UTC OF 05.11.2021 BASED ON 0300 UTC OF 05.11.2021.

BAY OF BENGAL:

A LOW PRESSURE AREA IS LIKELY TO FORM OVER SOUTHEAST BAY OF BENGAL AND NEIGHBOURHOOD AROUND 9TH NOVEMBER.

SCATTERED LOW AND MEDIUM CLOUDS WITH EMBEDDED INTENSE TO VERY INTENSE CONVECTION LAY OVER WESTCENTRAL BAY OF BENGAL, SOUTH BAY OF BENGAL AND ANDAMAN SEA. SCATTERED LOW AND MEDIUM CLOUDS WITH EMBEDDED WEAK CONVECTION LAY OVER EASTCENTRAL BAY OF BENGAL.

PROBABILITY OF CYCLOGENESIS (FORMATION OF DEPRESSION) DURING NEXT 120 HRS:

24 HOURS	24-48 HOURS	48-72 HOURS	72-96 HOURS	96-120 HOURS
NIL	NIL	NIL	NIL	NIL

ARABIAN SEA:

YESTERDAY'S LOW PRESSURE AREA OVER SOUTHEAST ARABIAN SEA AND ADJOINING LAKSHADWEEP AREA LAY OVER SOUTHEAST AND ADJOINING EASTCENTRAL ARABIAN SEA AT 0300 UTC OF TODAY, THE 5TH NOVEMBER, 2021. ASSOCIATED CYCLONIC CIRCULATION EXTENDS UPTO 5.8 KM ABOVE MEAN SEA LEVEL. IT IS LIKELY TO MOVE NORTH-NORTHWESTWARDS AND BECOME A WELL MARKED LOW PRESSURE AREA OVER EASTCENTRAL ARABIAN SEA DURING NEXT 24 HOURS AND CONCENTRATE INTO A DEPRESSION OVER THE SAME REGION DURING THE SUBSEQUENT 24 HOURS. THEN IT IS LIKELY TO MOVE WEST-NORTHWESTWARDS.

AS PER SATELLITE IMAGERY AT 0300 UTC, THE CONVECTION ASSOCIATED WITH THE LOW PRESSURE AREA IS SEEN AS SCATTERED TO BROKEN LOW AND MEDIUM CLOUDS WITH EMBEDDED INTENSE TO VERY INTENSE CONVECTION OVER CENTRAL ADJOINING SOUTHEAST ARABIAN SEA, LAKSHADWEEP AND NEIGHBOURHOOD.

SCATTERED LOW AND MEDIUM CLOUDS WITH EMBEDDED INTENSE TO VERY INTENSE CONVECTION LAY OVER CENTRAL & ADJOINING SOUTHEAST ARABIAN SEA AND MODERATE TO INTENSE CONVECTION LAY OVER COMORIN REGION. SCATTERED LOW AND MEDIUM CLOUDS WITH EMBEDDED WEAK TO MODERATE CONVECTION LAY OVER NORTH ARABIAN SEA.

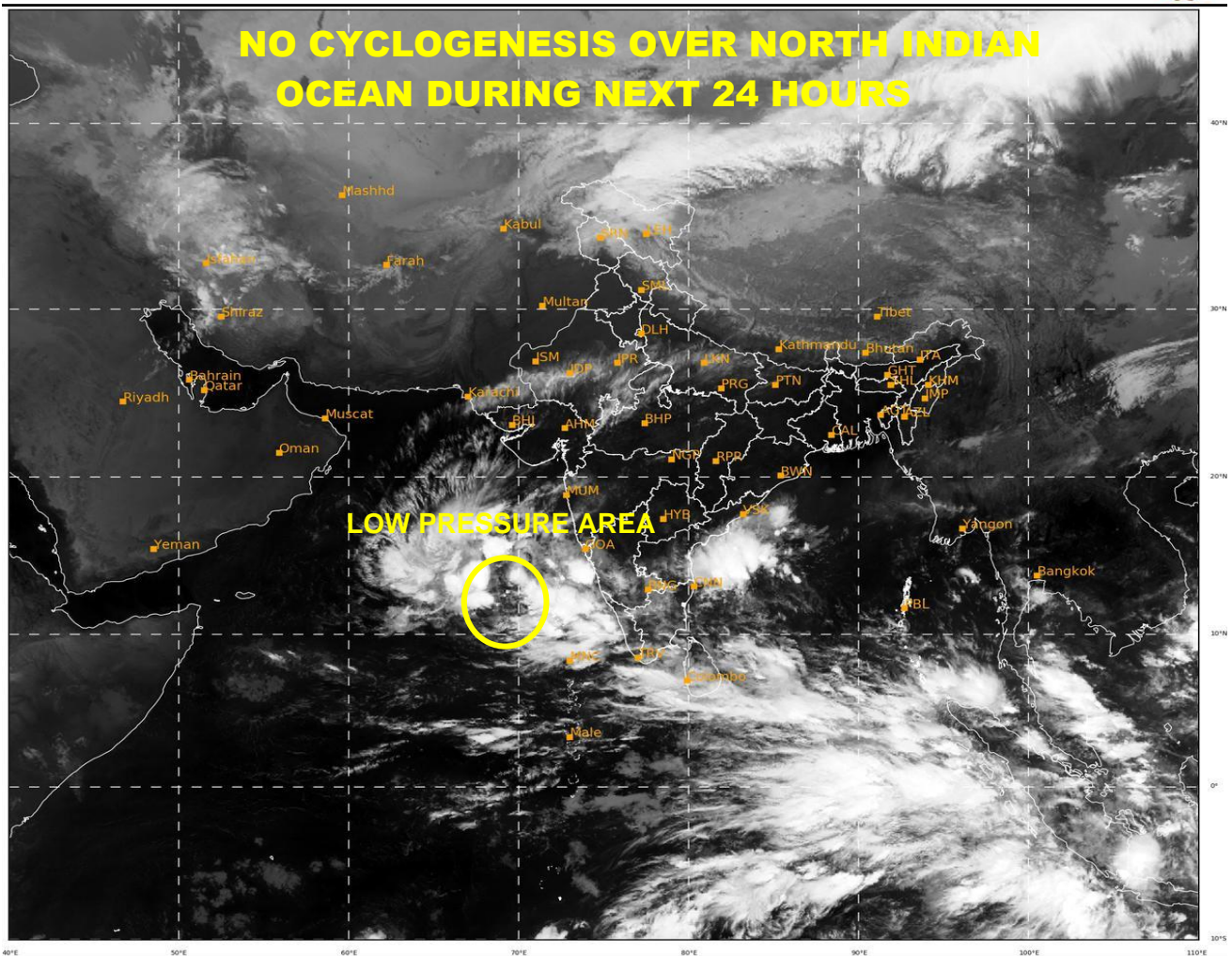
PROBABILITY OF CYCLOGENESIS (FORMATION OF DEPRESSION) DURING NEXT 120 HRS:

24 HOURS	24-48 HOURS	48-72 HOURS	72-96 HOURS	96-120 HOURS
NIL	LOW	MODERATE	MODERATE	LOW

REMARKS: THE CONVECTIVELY ACTIVE PHASE OF MADDEN JULIAN OSCILLATION IS CURRENTLY IN PHASE 3, WITH AMPLITUDE LESS THAN 1. IT IS LIKELY TO ENTER INTO PHASE 4 IN A COUPLE OF DAYS AND REMAIN THERE WITH AMPLITUDE LESS THAN 1 DURING THE SUBSEQUENT 2-3 DAYS. HENCE THE PHASE OF MJO WILL SUPPORT ENHANCEMENT OF CONVECTIVE ACTIVITY OVER THE NORTH INDIAN OCEAN DURING THE NEXT 5 DAYS. THE SEA SURFACE TEMPERATURE (28-29°C) AND OCEAN THERMAL ENERGY OVER SOUTHEAST & EAST-CENTRAL AS ARE FAVOURABLE TO SUPPORT CONVECTION. VERTICAL WIND SHEAR IS LOW (5-10 KNOTS) OVER SOUTHEAST & ADJOINING EAST-CENTRAL AS AND THE SHEAR TENDENCY IS NEUTRAL OVER THE REGION. THE LOW LEVEL CONVERGENCE IS $5-10 \times 10^{-5} \text{ S}^{-1}$ OVER SOUTHEAST AS. THE UPPER-LEVEL DIVERGENCE OF THE ORDER OF $10-20 \times 10^{-5} \text{ S}^{-1}$ IS SEEN TO BE SPREAD OVER A LARGE AREA COVERING SOUTHEAST AND ADJOINING CENTRAL PARTS OF THE AS. THERE IS A CYCLONIC VORTICITY FIELD ($70-80 \times 10^{-6} \text{ S}^{-1}$) EXTENDING UPTO MID-TROPOSPHERIC LEVELS OVER SOUTHEAST AS. THE UPPER TROPOSPHERIC RIDGE CONTINUES TO PASSES ROUGHLY ALONG LAT. 14°N OVER THE AS. A MOIST ENVIRONMENT, AS INDICATED BY THE TOTAL PRECIPITABLE WATER VAPOUR IMAGERIES PREVAILS OVER THE SOUTHEAST AND ADJOINING EAST-CENTRAL AS. A FEW OF THE NUMERICAL MODELS ARE SUGGESTING THAT THE PRESET LOW PRESSURE AREA COULD MOVE NORTH-NORTHWESTWARDS AND INTENSIFY OVER EASTERN AS. NCUM GROUP OF MODELS, IMD GFS & IMD GPP ARE SUGGESTING LIKELY NORTH-NORTHWESTWARD MOVEMENT & INTENSIFICATION OF THE CURRENT LOW PRESSURE AREA INTO A DEPRESSION AROUND 7TH NOV.. ITS FURTHER MOVEMENT IS PREDICTED TO BE IN A MORE WESTWARD DIRECTION AND ONLY NCUM PREDICTS FURTHER INTENSIFICATION OVER WEST-CENTRAL AS AROUND 10TH NOVEMBER. ALL OTHER MODELS ARE INDICATING SUBSEQUENT WEAKENING.

SAT : INSAT-3D IMG
 IMG_TIR1 10.8 um
 LIC Mercator

05-11-2021/(0300 to 0326) GMT
 05-11-2021/(0830 to 0856) IST



519

941

IMD, DELHI

PROBABILITY OF CYCLOGENESIS (FORMATION OF DEPRESSION): NIL: 0%, LOW: 1-25%, FAIR: 26-50%, MODERATE: 51-75% AND HIGH: 76-100%
 This is a guidance Bulletin for the WMO/ESCAP Panel Member countries,. Please visit respective National websites for Country specific Bulletins